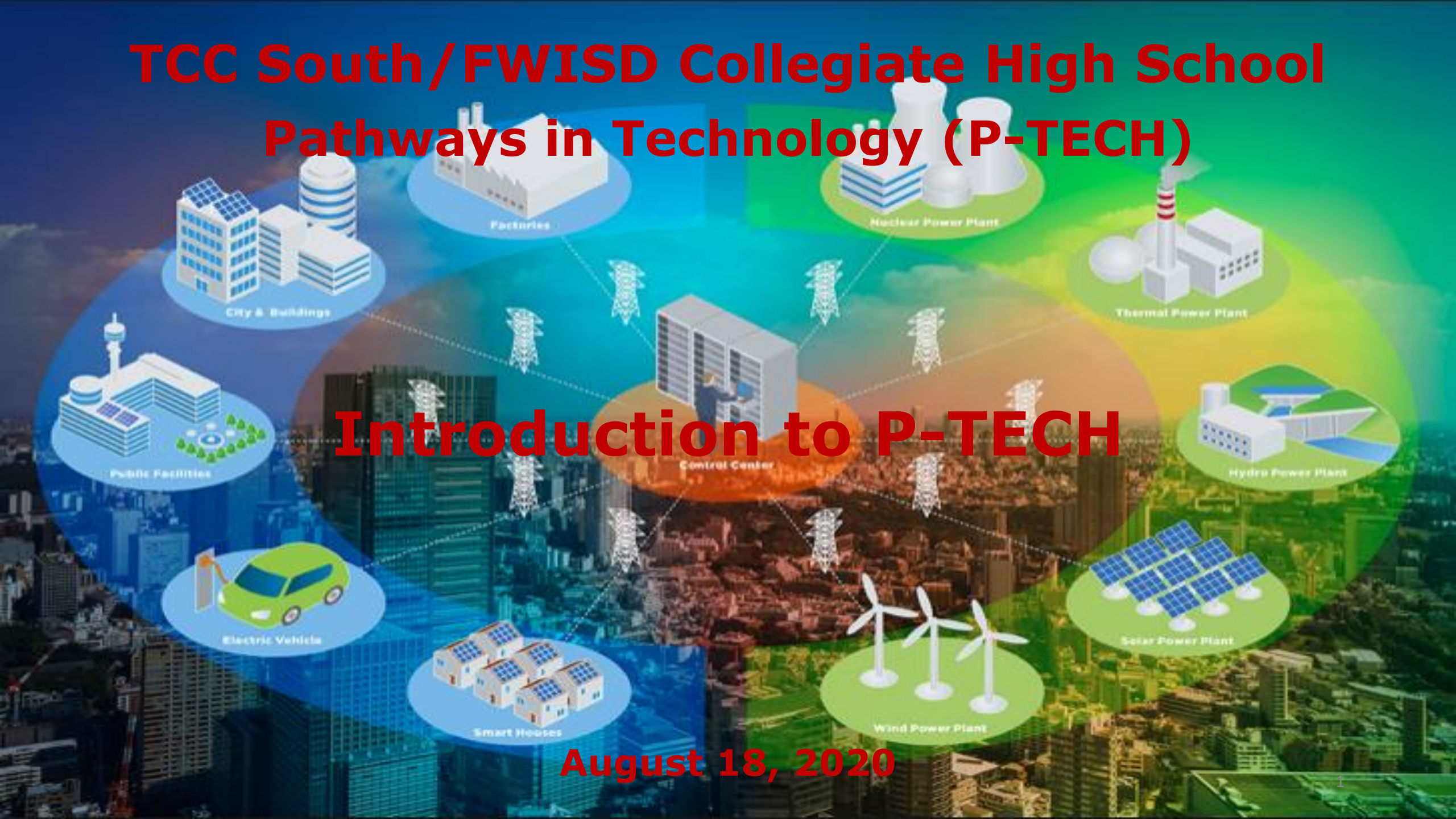


TCC South/FWISD Collegiate High School Pathways in Technology (P-TECH)

Introduction to P-TECH

August 18, 2020



What is **P-TECH**?

P-TECH is Pathways in Technology Early College High School

	P-TECH Overview
1	Students earn an Associate of Arts, Associate of Applied Science or Associate of Science degree - tuition free while in high school
2	Earn as many as 60 hours of tuition-free college credit
3	Eliminate thousands of dollars in college tuition costs
4	Graduate from a four-year university in less time than your peers

Wait now what makes **P-TECH** different?



P-TECH programs are required to also provide certifications for students.



Students enter the job market with a work-ready skills.



Students develop workplace skills through programs developed with industry partners. This is what we call work-based learning.



Our School Model

TCC South/FWISD Collegiate High School is a stand-alone campus

- The school is located on the college campus.
- Run on the College's calendar, not FWISD's.
- Students can participate in college clubs and organizations
- Does not offer UIL sports or music.
- Some college classes are given on the high school campus and some are taken at the college- either way, you just walk to class.
- Most of the elective classes that you take are dual-credit and are taught by the college.

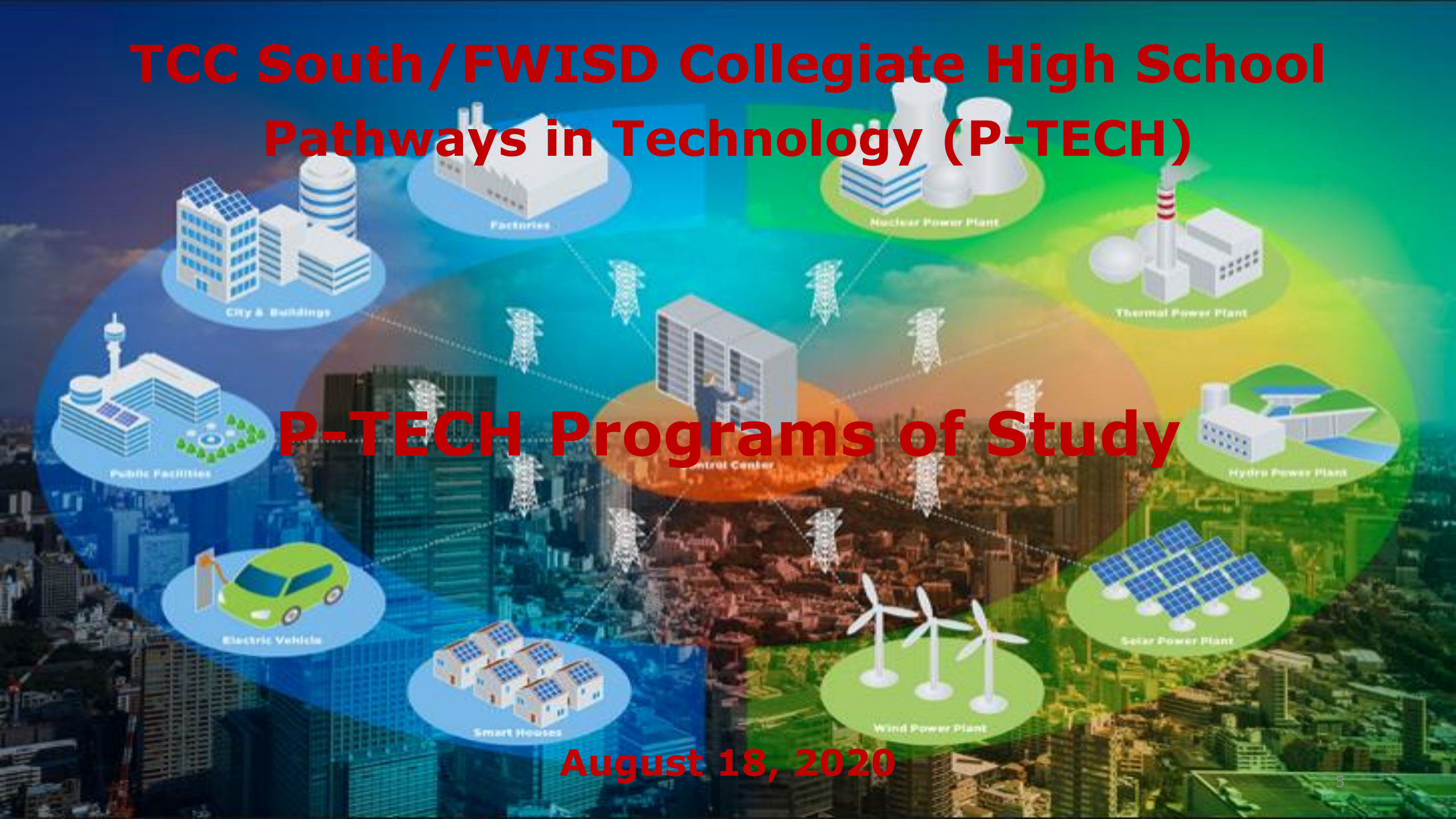


We are here to help our students achieve their goals.

TCC South/FWISD Collegiate High School Pathways in Technology (P-TECH)

P-TECH Programs of Study

August 18, 2020



4 Years from Now.... This Will be You!

TCC South Collegiate H.S. Grad!
Karla Almanza

TRANSLATE + Español नेपाली عربي ខ្មែរ Tiếng Việt Soomaali

OUR SCHOOLS + I WOULD LIKE TO +

f t i y

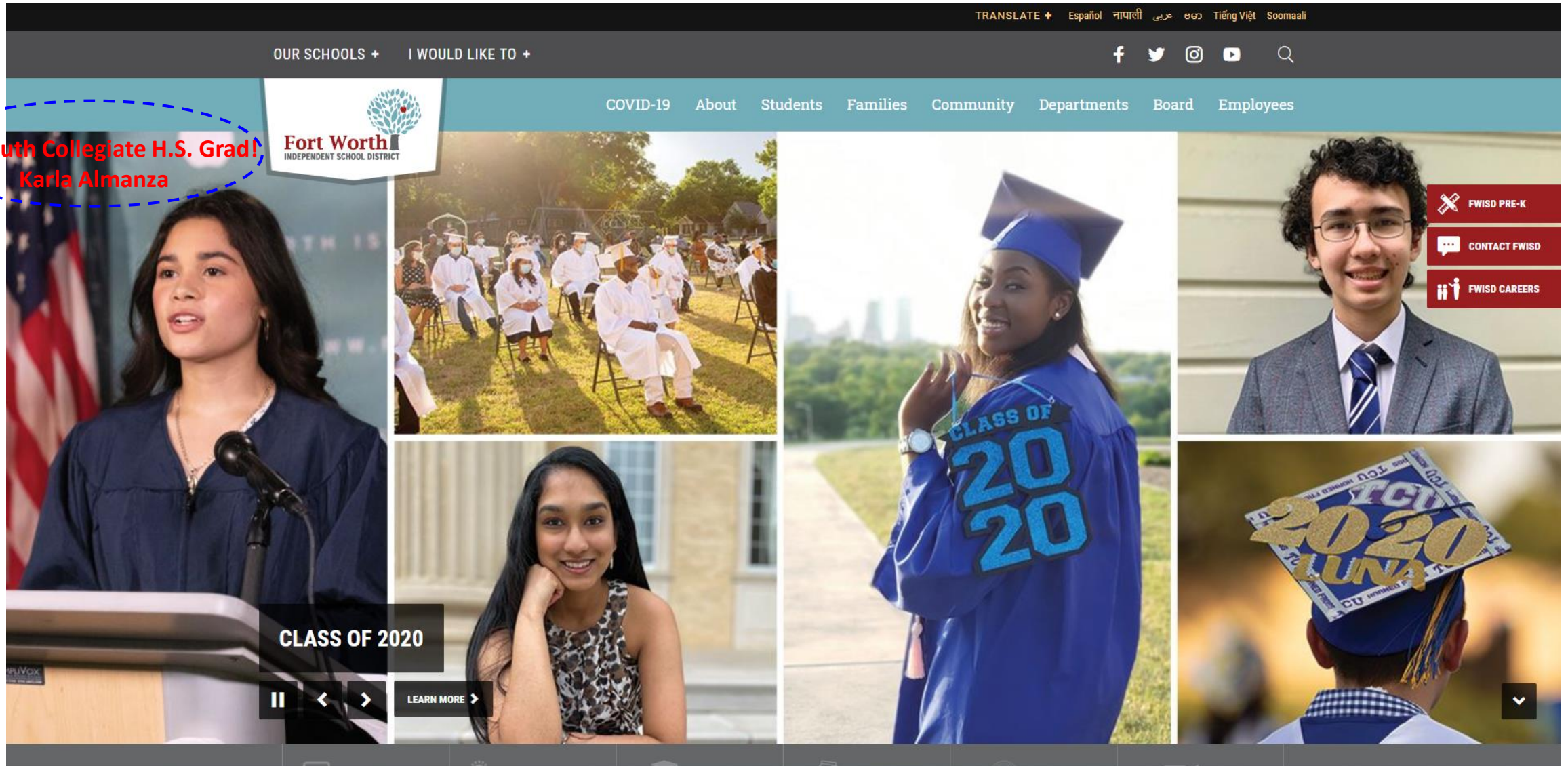
COVID-19 About Students Families Community Departments Board Employees

Fort Worth
INDEPENDENT SCHOOL DISTRICT

CLASS OF 2020

LEARN MORE >

FWISD PRE-K
CONTACT FWISD
FWISD CAREERS



My Journey.... How Will I Get There?

ROADMAP TO SUCCESS

Keep an Eye on Your Destination...
and Enjoy Your Journey!



Teachers & staff at TCC South Collegiate H.S.
are here to help you **succeed!!!**

are here to help you succeed!!!



What Is **P-TECH**?

- 1) P-TECH stands for **Pathways in Technology**, Early Collegiate High School
- 2) P-TECH is a program that offers individual pathways for students to simultaneously earn their **high school diploma and a two-year Associate degree and gain workplace learning experience.**

P-TECH provides exposure, opportunities, and priority for consideration for students when they are ready to enter the workforce.

- 3) P-TECH is a partnership between FWISD, TCC, and industry partners
 - Industry partners include **Oncor Electric and Ft. Worth Water Department**



***All new, in-coming students to
TCC South/FWISD Collegiate High School
are automatically enrolled in the P-TECH program.***

How Will **P-TECH** Benefit Me?

- ✓ P-TECH includes an Early College High School (ECHS) environment
 - Students have an opportunity to graduate with **60+ hours of transferable college credit!**
- ✓ P-TECH provides students the opportunity to earn both a high school diploma and a two-year **Associate Degree tuition free!**
 - Students can select different pathway certifications based on their career interests
- ✓ P-TECH provides a rigorous college-preparatory curriculum
- ✓ P-TECH offers small, industry-focused, and personalized learning community
 - Teachers & staff provide a lot of support and help to ensure your success
- ✓ P-TECH offers engaging, **high-skilled & high-demand career opportunities** with work-based learning experiences



What Are the **P-TECH Pathways**?

P-TECH Offers **3 Pathway Options** for Students:

1) Option #1: **Electronics Technology: Advanced Energy Technician**

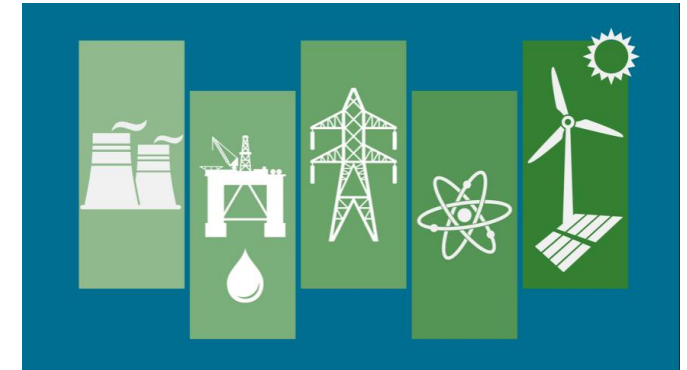
- Earn a 2-year Associate of Applied Science degree
- Certification: Renewable Energy Technology Level 1

2) Option #2: **Electrical Line Technician**

- Earn a 2-year Associate of Applied Science degree
- Certifications:
 - ✓ Ground Technician Level 1
 - ✓ Renewable Energy Line Technician Level 2

3) Option #3: **Energy Business-Related Coursework**

- Earn a 2-year Associate of Arts degree
- Certification:
 - ✓ Business Certification Level 1
 - ✓ Business Certification Level 2 (May be Possible)



P-TECH provides work-based learning experiences through internships and apprenticeships.

What Can I Earn for Graduation?

- 1) Students must successfully complete all FWISD & TCC academic requirements, P-TECH program requirements, and course work.
- 2) In **just 4 years**, students can qualify for and earn the below graduation credentials:

	Pathway	Degree	Major/Specialty	Institution
	All Students	High School Diploma	General Education	Collegiate H.S.
1	Electronics Technology: Advanced Energy Technician	Associate of Applied Science	Certification: <ul style="list-style-type: none">▪ Renewable Energy Technology Level 1	TCC
2	Electrical Line Technician	Associate of Applied Science	Certification: <ul style="list-style-type: none">▪ Ground Technician Level 1▪ Renewable Energy Line Technician Level 2	TCC
3	Energy Business-Related Coursework	Associate of Arts	Certification: <ul style="list-style-type: none">▪ Business Certification Level 1▪ Business Certification Level 2 (Possible)	TCC

As part of the P-TECH course work, students can earn certifications in:

- OSHA General-Industry Safety Certification
- Microsoft Office Certification (Word, PowerPoint, Excel)

When Do I Select a **P-TECH** Pathway?

You will be asked to make a decision on your chosen P-TECH pathway at the beginning of the second semester.

	Steps for Selection of Pathway
1	The counselor will send a communication message to parents & guardians about the P-TECH pathway selection process.
2	Students can get guidance from counselors and professors about each of the pathways, including the course work and value of each of the programs.
3	Students to talk to parents/guardians about your choice of the pathway for study within the P-TECH program.
4	Students to make a decision on your choice of the P-TECH pathway for study.
5	Students to communicate your decision on the pathway to your counselor. <ul style="list-style-type: none">▪ An online tool will be used for students to indicate your pathway decision.



Contacts for Questions about P-TECH Pathways

- 1) If you and your parents/guardians have further questions about the P-TECH program and pathways, please contact the high school to set up an appointment.
- 2) Staff members at TCC South/FWISD Collegiate High School can address your questions and provide guidance regarding the P-TECH pathways:
 - **Ms. Mayra Vincent, Counselor**
 - **Mrs. Shenieta Gillyard, P-TECH Program Leader**
 - **Professor Mildred Hsueh, Teacher - Career & Technical Education**
 - **Professor Tuan Tran, Teacher - Career & Technical Education**



We are here to help you make the best decision for your area of interest and career path.

Foundations of Energy – What Is That For?

All new, in-coming P-TECH students are required to take the Foundations of Energy class

- ❑ **Foundations of Energy** is an exploratory, high-level course in Electrical Energy and Career Preparation
 - 1) Explore & learn general aspects of the Electrical Energy field
 - 2) Learn & get certified in Microsoft Office productivity software
 - Word, PowerPoint, Excel
 - 3) Learn & get certified in OSHA Safety Standards & Practices
- ❑ The Foundations of Energy class will help students to **decide on their area of interest and career path** for the P-TECH program!
- ❑ Students will have the opportunity to attend field trips with FWISD/TCC industry partners
 - Oncor Electric
 - Ft. Worth Water Department



Got Questions about **Electrical Energy**?



Why should I care about electricity?

How is electricity used?

What are the sources of electrical energy?

How does electrical energy work?

How is electricity produced?

Are there different types of electrical energy?

Who makes electricity?

How does electricity get to me?

Do I need to be careful around electricity?

How does electricity affect our society?

Will we run out of electricity one day?

Are there good jobs in the electrical energy field?



Work-Based Learning (WBL) – The Fun Stuff!

FWISD/TCC Industry Partners: Oncor Electric and Ft. Worth Water Department



Oncor Electric



Oncor Electric



Oncor Electric



Ft. Worth Water



Ft. Worth Water



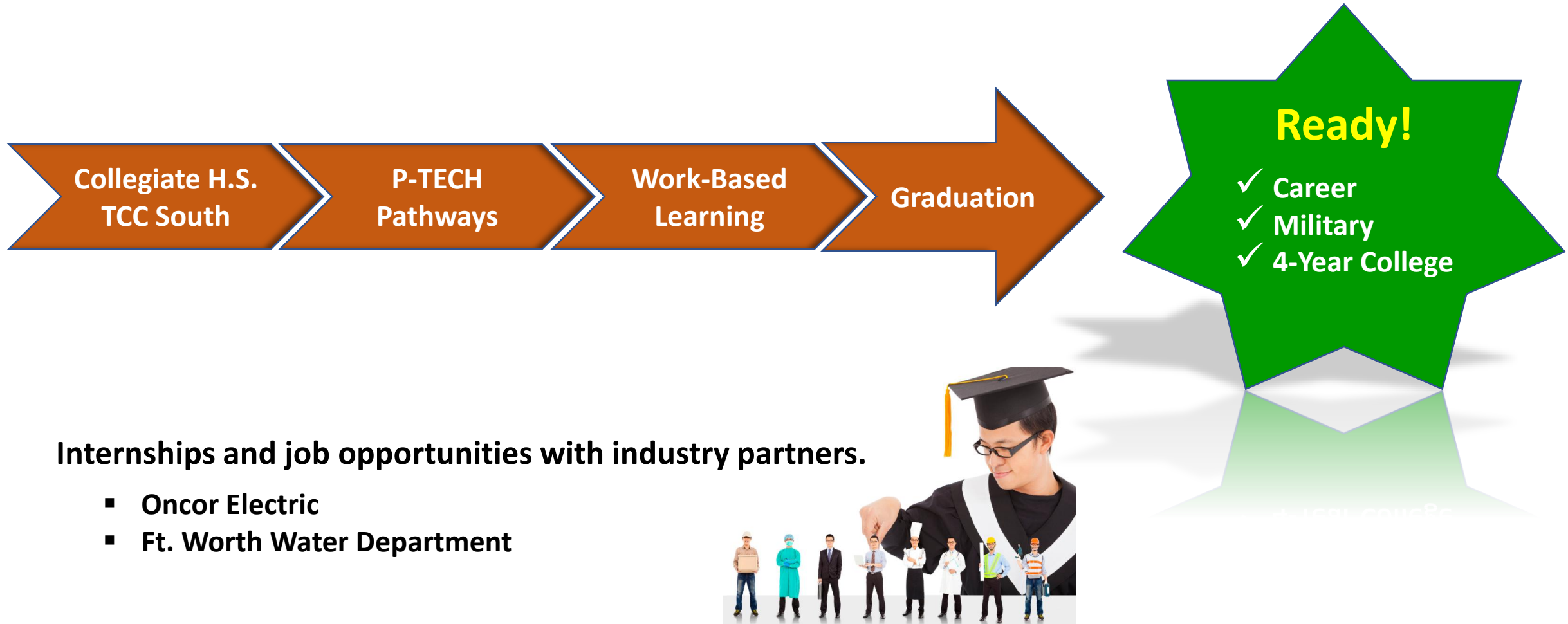
CTE National Signing Day

This is us! On our way to **SUCCESS!**



Your Journey.... 4 Years from Now

P-TECH prepares you for success in College, Career, and Military!



Yup, our industry partners got GREAT jobs!

You will have an opportunity to apply for and possibly land an **internship with them.... and maybe even a full-time job after you are done with school!**

You can prepare for and pursue jobs in different career fields:

- **Field Technicians**
- **Customer Service/Call Center Representatives** (Sales & Ordering, Help Desk)
- **Engineering & Operations**
- **Accounting & Finance**
- **Human Resources**
- **Information Technology (IT)**
- **Marketing & Public Relations**
- **Supply Chain**

Barack Obama and Co.
1600 Pennsylvania Ave NW
Washington, USA

5729

DATE: NOW

PAY TO: \$

SHOW ME THE MONEY!

PAY TO:

Payment to You

NAME: What's Coming to Me

10/11 AM ☒ AMOUNT

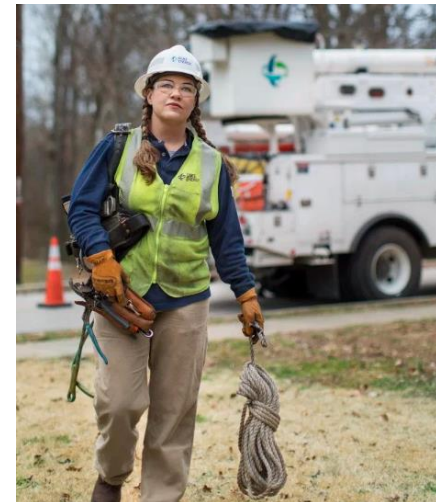
1000045678000 0000:1

110000

Barack Obama

470-215

Career Opportunities!



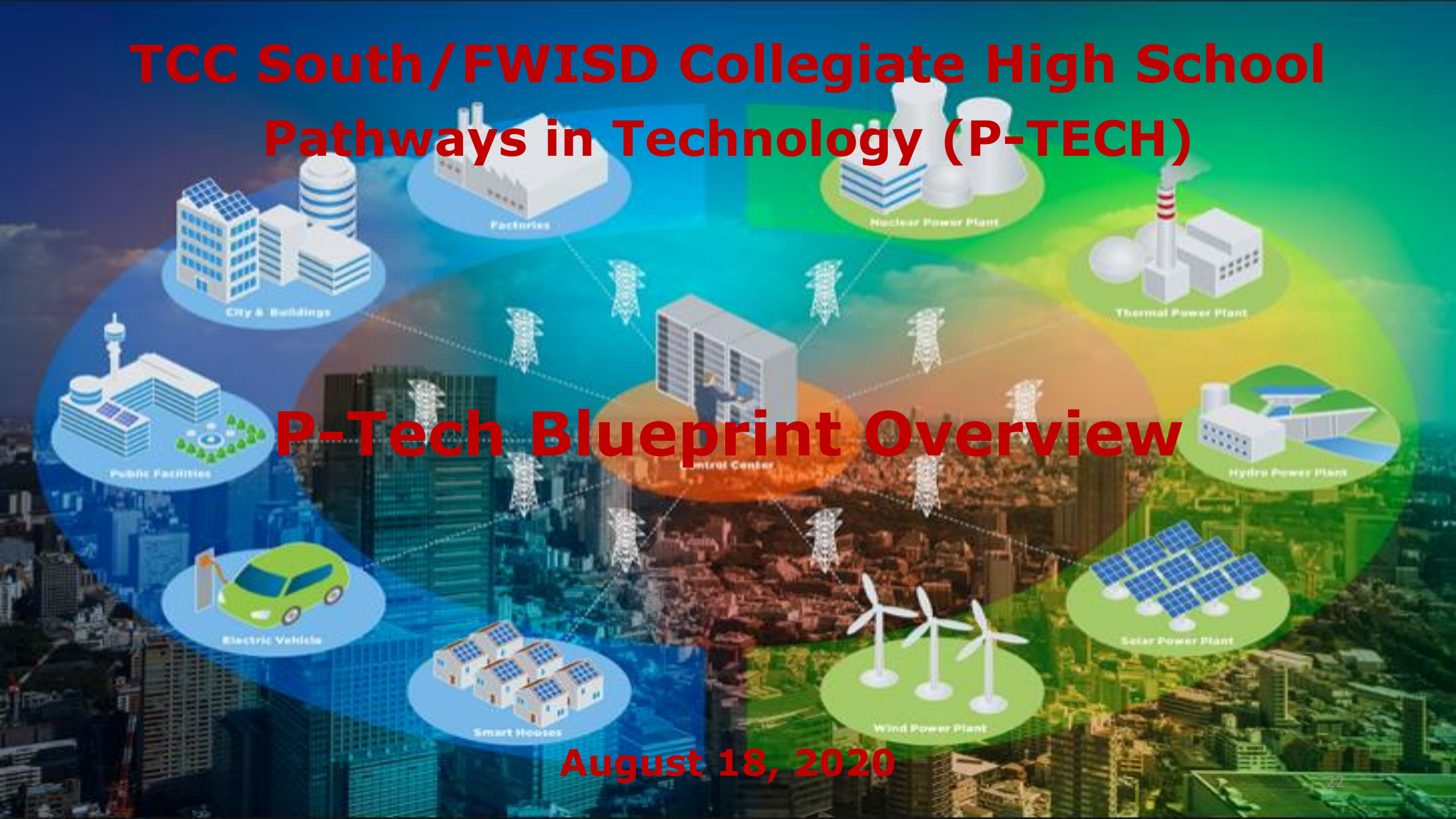
Career Opportunities!



TCC South/FWISD Collegiate High School Pathways in Technology (P-TECH)

P-Tech Blueprint Overview

August 18, 2020



P-TECH Blueprint

- The P-TECH Blueprint provides foundational principles and standards for innovative partnerships with colleges, universities, and industry.
- The P-TECH Blueprint contains six benchmarks outlining the design elements that each P-TECH campus must implement before serving students.
- Additionally, outcome-based measures (OBM's) in Access, Attainment, and Achievement provide guidance for P-TECH program implementation and continuous improvement efforts.

P-TECH Blueprint OBM's

Access Outcomes-Based Measures

TEA is currently in a phase-in process for the new P-TECH Blueprint. These data are for information and planning purposes only. This information will not be used to determine designation status.

Data Indicators	Provisional	Designated	Designated with Excellence
Requirements	Must serve at-risk incoming 9th graders .	Must serve at-risk incoming 9th graders and economically disadvantaged students .	Must serve at-risk incoming 9th graders, economically disadvantaged students , and at least one additional target population of students
P-TECH proportionate to or over-represents at-risk incoming 9th graders	No more than 20% points under district	No more than 15% points under district	No more than 10% points under district
P-TECH proportionate to or over-represents economically disadvantaged students	No more than 10% points under district	No more than 5% points under district	Meets or over-represents district
P-TECH proportionate to or over-represents English learners	Not taken into account for designation	Not taken into account for designation	No more than 5% points under
P-TECH proportionate to or over-represents students with disabilities	Not taken into account for designation	Not taken into account for designation	No more than 5% points under

Data on the following historically under-represented populations will also be provided in the Outcomes-Based

Measures Summary Report:

- African American Students
- Hispanic Students

These data are for informational purposes ONLY and are not used to determine a P-TECH's designation status.

P-TECH Blueprint OBM's

Attainment Outcomes-Based Measures			
<i>TEA is currently in a phase-in process for the new P-TECH Blueprint. These data are for information and planning purposes only. This information will not be used to determine designation status.</i>			
Data Indicators	Provisional	Designated	Designated with Excellence
Requirements	Must meet college-level course and Work-Based Learning requirements	Must meet targets on at least four attainment data indicators	Must meet targets on at least five attainment data indicators
Grade-to-grade persistence by subgroup (weighted)	Not taken into account for designation	Retain 80% of students who remain in district grade-to-grade	Retain 90% of students who remain in district grade-to-grade
Completing one college-level course by end of 11th grade (any)	80% of students (by the fourth year of implementation)	90% of students	100% of students
Earning postsecondary degree provided by an IHE by graduation	Not taken into account for designation	30% of students	50% of students
Earning a postsecondary credential provided by an IHE by graduation	Not taken into account for designation	30% of students	50% of students
Earning industry certification by high school graduation	Not taken into account for designation	30% of students	50% of students
Earning postsecondary degree or postsecondary credential provided by an IHE or industry certificate by high school graduation	Not taken into account for designation	80% of graduating cohort of students	100% of graduating cohort of students
Participating in a Work-Based Learning placement/course by graduation	35% of students (by the fourth year of implementation)	50% of students	85% of students

P-TECH Blueprint OBM's

Achievement Outcomes-Based Measures			
TEA is currently in a phase-in process for the new P-TECH Blueprint. These data are for information and planning purposes only. This information will not be used to determine designation status.			
Data Indicator	Provisional	Designated	Designated with Excellence
Requirements	Must meet at least one targets	Must meet at least three achievement data indicators	Must meet at least four achievement data indicators
Meet TSI criteria (SAT/ACT/TSIA) in reading and mathematics	35% passing rate on one or more college readiness benchmarks	50% passing rate on one or more college readiness benchmarks	60% passing rate on one or more college readiness benchmarks
Earn industry certification	Not taken into account for designation	30% of students	50% of students
Earn an associate degree	Not taken into account for designation	30% of students	50% of students
Complete a course for dual credit	35% of students	80% of students	100% of students
Algebra I EOC assessment in 9 th grade	Not taken into account for designation	85% of students meeting grade level standard	85% of students meeting grade level and 45% mastering grade level standard
English II EOC assessment (grades 9-11)	Not taken into account for designation	85% of students meeting grade level standard	85% of students passing and 25% of students mastering grade level

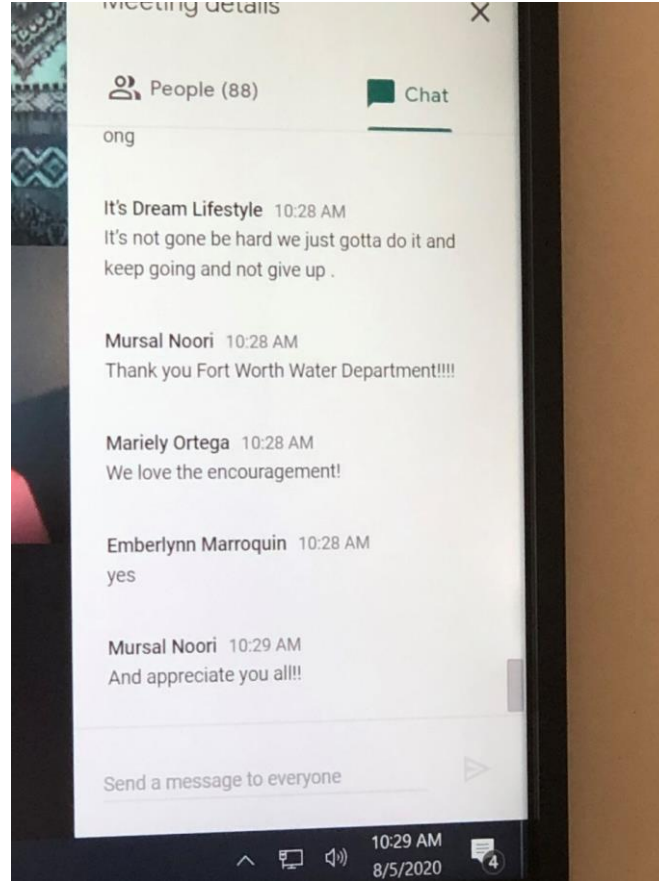
P-TECH Blueprint



P-TECH Blueprint Link

https://tea.texas.gov/sites/default/files/2020_P-TECH_Blueprint_2-13-20.pdf

Virtual Summer Bridge



Summer Bridge was a success!

Students were on their best behavior during the industry partners presentations

Students were actively engaged in all sessions; they asked great questions

Average attendance was about 80 people (Students and Professors combined)

Questions?

